

PROCLAIM JESUS CHRIST, GROW IN FAITH, LOVE ALL PEOPLE

# RLC Newsletter

## October 2018

## A message from Pastor Allman by Pastor David Allman

Søren Kierkegaard was a 19<sup>th</sup> century Danish philosopher, theologian, poet, social critic and religious author. He developed an analogy of the Sunday morning worship service which he called “*the theater of worship*.” His challenge was to imagine public worship as a kind of theater performance and asks us to identify the stage, the actors and the audience.

Based on most people’s experience of worship, people have identified the stage as the chancel (Altar) area, the worship leaders as the actors, and the congregation as the audience. Kierkegaard would consider that to be the wrong way of looking at worship. Kierkegaard says we should consider the entire sanctuary to be the stage, the entire congregation to be the actors, and God is the audience.

Does this change your perception of worship? There is a somewhat blunt, pretend conversation being posted on social media that goes something like; First Worshipper: *I did not get anything out of worship today.* Second Worshipper: *That’s okay, we were not worshipping you.* That is certainly a harsh way to drive the point home. And yet, there are people still who come to church expecting to receive or even be entertained; and, they feel unfulfilled when they leave worship without getting something out of it.

Does that mean we should never get something from worship? Certainly not! It certainly is possible to leave worship having been blessed by something in worship. The point is that we come to Church to worship God,

which means that we are there to give something rather than get something. We give our praise and thanks. We give our whole selves as an offering. We give our attention to listen to God’s Word. And, we give ourselves over to God’s Will and design for our world.

It can also happen that during our giving worship to God, God will fill us with the joy of knowing that we are loved; God will restore our courage through forgiveness; God will provide the Word for our hungry hearts; as well as bread and wine for our new life in Jesus Christ. In this scene the stage is the Kingdom of God, the Holy Spirit is the primary actor, and all believers become the audience.

Worship becomes paradoxical where God can be both audience

and primary actor; and, believers are both actors and audience. Worship ushers us into the presence of the living God and demands the attention, receptivity, and response of our whole being. I look forward to being with you in worship.

*Pastor Allman* ✝

### Thank you!!

Noah, Candy and I want to thank everyone who helped us celebrate Noah's 18<sup>th</sup> birthday. Thank you to everyone who ate cake so we did not have to take it home; to the ladies who cut and served the cake; to those who worked in the kitchen; and to those who gave Noah cards and gifts. YOU are what make our ministry at Redeemer so special.



Happy 18<sup>th</sup> Birthday Noah Allman

## News from the Office Administrator

### October 2018

Happy Fall! The Welcome Table is filling up with opportunities as we begin the fall season in Sun City Center. Make sure to check the table and mark your calendars for the activities you would like to participate in.

I want to highlight a recently scheduled event coming up in November. We will be hosting a Thrivent Appreciation Day immediately following the service on Sunday November 4<sup>th</sup>. We will have enhanced refreshments courtesy of a Thrivent Action Card and there will be an opportunity to see some of the many ways the cards and Choice Dollars contribute to our life here at Redeemer and in the local and global community. We will have a Thrivent Representative here to answer any questions you might have.

Hopefully by now you have had a chance to check out the remodeled library. We are continuing to accept donations to cover the cost of the new couches. To contribute, designate your gift on the memo line of your check, on your offering envelope, or see Susan or Kadie.

Our Visitation/Communion Teams continue to reach out to our members in need with companionship and communion. Our parish nurses are providing support to our members with medical issues. ***Our list of folks who are homebound keeps increasing and we could use more team members to visit them, particularly men to visit other men. If you know of anyone who needs visiting or help with a medical question, or if you would like to be one of our volunteers providing care, please feel free to contact me at carekeepersccr@gmail.com or call the church office at 813-634-1292.***

### Upcoming Events:

**Thursdays at 10:00 AM** – Bible Study in Buhr Hall. FREE!

**Tuesday, October 9 at 11:30 AM** – Hands of Faith event, reaching out to cancer patients.

**Sunday November 4** – Thrivent Appreciation Fellowship immediately following the service, with light refreshments

**Tuesday, November 13 at 11:30 AM** – Dementia Presentation, by A.J. Cipperly of Inspired Living, A free lunch will be served.

**Wednesday, December 5 from 5:00 PM - 7:00 PM** – Christmas Cheer & Carols. BYO beverage, snacks provided by Thrivent.

**Monday, December 10 at 7:00 PM** – South Shore Concert Band will be here with a Christmas Concert! This will be a ticket only (free ticket) event to control the crowd this time. More news to come!

**Tuesday January 15** – Hearing Loss and the Aging Brain, more details to come.

# OCTOBER STEWARDSHIP

by Pastor David Allman

Based on a daily devotion by Rev. Nicky Gumble and "Soul Feast" by Rev. Marjorie Thompson.

*"I will sing to the LORD as long as I live; I will sing praise to my God while I have being. May my meditation be pleasing to him, for I rejoice in the LORD"* (Psalm 104:33-34, emphasis added).

If you know how to worry, you know how to meditate. All you need to do is change what you think about and you will be practicing Christian meditation.

Meditation means what you think about, what you allow your mind to dwell on. Your actions and words can please the Lord or not; it is your inward and unseen meditation as well.

The Psalmist praises God for the entire created universe. He says, *"I will sing to the LORD as long as I live; I will sing praise to my God while I have being"* (33). The he prays, *"May my meditation be pleasing to him"* (34).



What does this mean practically? The Apostle Paul has some good advice: *"...whatever is true, whatever is noble, whatever is right, whatever is pure, whatever is lovely, whatever is admirable - if anything is excellent or praiseworthy - think about such things..."* (Philippians 4:8).



Meditation is more than prayer. Meditation allows a Christian to be absorbed into a loving God with our whole being. Its purpose is to adore and enjoy God. Have you ever stopped to think what it means to enjoy God? Why do we have trouble believing that God longs for our companionship and delights in it? What would it take to convince you that God also yearns for us to delight in the divine presence? Part of our spiritual maturation (#2 in our Mission Statement, 'Grow in Faith') is learning to love God for who God is, and not only for what God does for us.

*May our meditation be pleasing to God!*



## Social Ministry & Benevolence Thank you! Summer Benevolences

During the summer months the Redeemer Congregation has supported 3 very deserving organizations. In June, we supported Lutheran Services of Florida. This group reaches out to the immigrant community, homeless people, and those affected by disasters. Our donation will be used to enrich their mission.

During July, the congregation donated to the new Sun City Center Veterans' Memorial. Many members donated in the memory of Mike Trefren, who died in July. Walt Cawein accepted the donation for a brick which says "REDEEMER LUTHERAN CHURCH HONORS ALL VETERANS". The money to honor Mike was accepted with gratitude by the Trefren family. This donation will be used to help build the memorial. This memorial is still in need of funds. Bricks can still be purchased to honor veterans.



*Rosalie Kelleher, Jane Trefren and Diane Brace (members of the RLC Social Ministry team) presented check to Walt Cawein of the Sun City Center Charitable Foundation. Photo credit: Lois Hobratschk*

During August, we collected funds for the Good Samaritan Mission. The funds we donated are being used to enrich the mission's programs. Pastor Cruz related to me that their sewing class needs all sewing items. He also said everyone is welcome to visit the new location which is located near the Horse Thrift Store behind Burger King.

We the congregation of Redeemer have impacted many people through our generosity and prayers. God continues to move us to be the people of God. I have been honored to be the leader of Social Ministry for 3 years. I hope everyone will continue to support our efforts to be sharing and caring

people. Diane Brace has volunteered to take over the chair of Social Ministry.

With gratitude, Jane Trefren  
Social Ministry Team

## Social Ministry Projects

The summer months were very busy for projects. In June we collected hygiene and baby items for the Good Samaritan Mission. Those items were taken to the new location by Mike and Jane Trefren. Pastor Cruz accepted them and said he would use them to replenish their new trailer pantry.

In July, we collected school supplies. Three elementary schools were recipients. Diane Brace delivered supplies to Reddick, Thompson and Ruskin schools. The principals were grateful for our donations. We were able to help the schools provide necessary items to their students.



*Pictured are Jerry Kelleher, Jeanne Pruett, and Rosalie Kelleher with staff from Cypress Creek Elementary School in Ruskin. Photo credit: Lois Hobratschk*

During the month of August personal hygiene items were collected for school health kits. Donated items and purchases using the Thrivent action card made it possible for 76 health kits to be put together. These health (hygiene) kits along with hand sanitizers will be used to help students learn healthy hygiene habits. Thanks to all the members of our congregation that continue to make social ministry and benevolence projects a success. Thank you again for your generosity!

Peace be with you,  
Jane Trefren & Diane Brace  
Social Ministry team

## Benevolence and Social Ministry Project October 2018 - AMIKids

### AMIKids Car and Golf Cart Wash

Youth and counselors from AMIKids will be on hand to scrub, rinse and dry your vehicle(s). (Sorry, no interiors)

Come early with your cart and return later with your car!

This community service project is made possible with generous support from Thrivent Action Team Community Impact Card and the Redeemer Lutheran Church. Thank YOU for your support, too!



**Freewill donations graciously accepted.**

**Event date: Saturday, October 6<sup>th</sup> from 10:00 AM to 1:30 PM.** Rain date: Saturday, October 13<sup>th</sup>.

**Event Location: Redeemer Lutheran Church parking lot, 701 Valley Forge Blvd. SCC**



AMIKids is a private, nonprofit staff-secure residential facility working with non-violent offenders involved in the Florida Department of Juvenile Justice. The program is in Wimauma and recently expanded to serve 32 boys at any given time. Boys stay in the program between 6 and 9 months. They have ongoing needs for day-to-day

men's toiletry items, namely shampoo, body wash, deodorant, tooth brushes, toothpaste, hair combs and hair brushes. You may bring these items to place on the table in the Narthex if you would like to help out this way.

AMIKids is also in need of new or used books appropriate for teen-aged boys. Tony Altman, Executive Director at AMIKids, shared that the reading level for the boys in residence has improved and they are really enjoying the books and can use some more. So be on the lookout at yard sales, thrift stores, dollar stores, etc. I found some great non-fiction books on sports, science and animals at the library to pass on to them and the cost to me was under \$4! Please bring any books you wish to donate and place them on the table in the Narthex.

We can bless these boys with our benevolence funds to help brighten their Christmas. The AMIKids staff will be shopping to take advantage of black Friday sales to purchase a new pair of shoes, a new shirt, and a new pair of khaki shorts for each boy in residence. Please be sure to mark your check and outside your envelope in October for AMIKids benevolence to help towards the purchase of a new outfit for each boy.

A Thrivent Community Impact Card for \$250 is on its way to help with the annual **Car/Golf Cart Wash** to benefit AMIKids. Youth and counselors from AMIKids will be at Redeemer Lutheran Church to scrub the exteriors only (sorry no interiors). We hope to see you on **Saturday, October 6 between 10:00 AM and 1:30 PM.** (Rain date is Saturday, October 13) Free will offering will be graciously accepted. If you choose to donate by check for the car wash, please make your check out to Redeemer Lutheran Church and note "Car Wash" in the memo line. Donations to the Car/Golf Cart Wash will be used to purchase socks, undershirts and underwear for the boys.

Thank you so much for your support of the Social Ministry project and Benevolence this month to help the boys at AMIKids.

Peace be with you,  
Diane Brace

## Food Pantry. . . Because no one should go hungry.

Greetings!

Do you love to shop for groceries? Do you use coupons or shop the "Buy One, Get One" sales? Do you go to your pantry and check what items you need to purchase? If you need something, chances are the families supported by Our Lady's Pantry do too! Our Lady's Pantry supports about 200 households EACH WEEK and they need our help. When you come to church on Sunday, please bring a pantry item to share. I know this is hard to remember to do when you feel pressed for time to get ready to leave home to get to church on time. So, when you shop each week, try setting aside those extra BOGO items you got FREE. On Saturday night put these items next to your purse, your church envelope, your car keys, or maybe in the seat of your car where you will find them the next morning. I hope you will try this. I know I will.

"Truly I tell you, whatsoever you do for the least of my brethren, that you do unto me." Matthew 25:40

Are you in need of food? Our Lady's Pantry serves individuals in Balm, Wimauma, and Sun City Center. They are open on Saturday morning between 7:30 AM and 11:30 AM. for distributing food. You will need to register if you are visiting for the first time. Our Lady of Guadalupe Catholic Migrant Mission is immediately south of Sun City Center Blvd., on U.S. Highway 301, in Wimauma, Fl. 33598. You may visit their website at [www.ourladyspantry.com](http://www.ourladyspantry.com) for more information about their services and volunteer opportunities.

Peace be with you,  
Diane Brace  
Social Ministry Team



## Rummage Sale

We will be collecting items for the Rummage sale on October 15, 16, and 17th.

**Monday Oct. 15 from 9:30 AM to 12:00 PM**  
**Tuesday Oct. 16 from 9:30 AM to 12:00 PM**  
**Wednesday Oct. 17 from 9:30 AM to 12:00 PM**

All items should be brought to Buhr Hall. Items must be clean and in good condition. We will be collecting the following items:

clothing (no heavy winter items please),  
 clothing accessories  
 shoes (in next to new condition)  
 scarves  
 purses  
 jewelry  
 linens (that are in good shape)



All other items will be collected in upcoming months.

If you can help on these days please show up to help price and sort.

The book cases that were in Pastor's office are currently for sale. Please see Jane Trefren if you are interested.

Thank you for your support.

Jane Trefren for WELCA

## From Parish Nurse Team

# Peripheral arterial disease

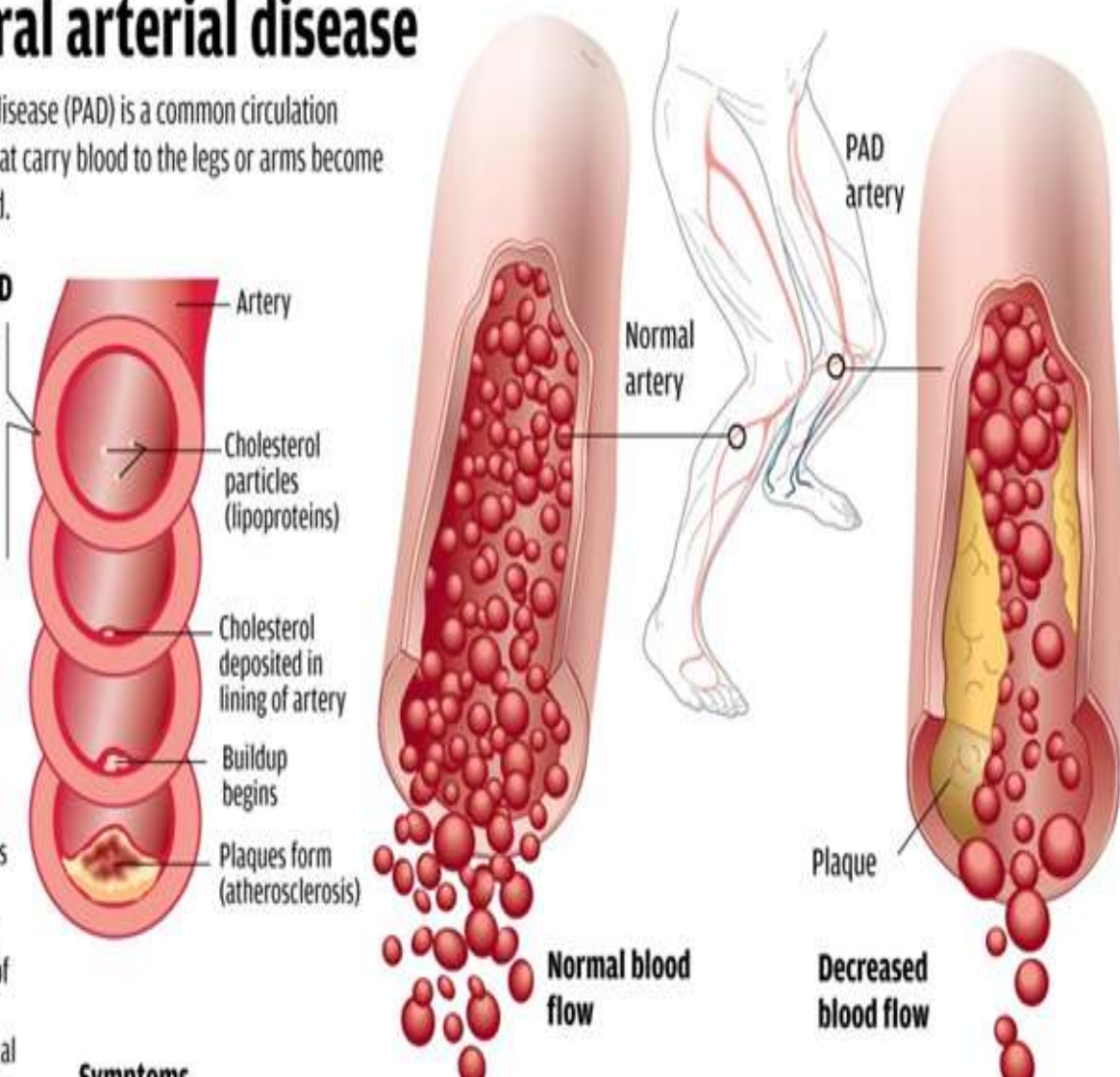
Peripheral arterial disease (PAD) is a common circulation problem; arteries that carry blood to the legs or arms become narrowed or clogged.

### Main cause of PAD

Hardening of arteries  
Plaque builds up in arteries; narrows, blocks blood flow (also called atherosclerosis)

### Risk factors

- Smoking
- Diabetes
- Obesity (a body mass index over 30)
- High blood pressure (140/90 millimeters of mercury or higher)
- High cholesterol (total blood cholesterol over 240 milligrams per deciliter, or 6.2 millimoles per liter)
- Increasing age, especially after reaching 50 years of age
- A family history of peripheral artery disease, heart disease or stroke
- Excess levels of homocysteine



### Symptoms

- Painful cramping in your hip, thigh or calf muscles after activity, such as walking or climbing stairs (intermittent claudication)
- Leg numbness or weakness
- Coldness in your lower leg or foot, especially when compared with the other leg
- Sores on your toes, feet or legs that won't heal
- A change in the color of your legs
- Hair loss or slower hair growth on your feet and legs
- Slower growth of your toenails
- Shiny skin on your legs
- No pulse or a weak pulse in your legs or feet
- Erectile dysfunction in men

### Treatment

- Tobacco cessation
- Regular exercise
- Healthy diet
- Diabetes management

If these are not successful, medications and surgery may be necessary.

## OCTOBER BIRTHDAYS

---

- 1<sup>st</sup> – Susan Wold**  
**2<sup>nd</sup> – Jay King**  
**4<sup>th</sup> – Pat Fricke**  
**5<sup>th</sup> – Anne Kohler**  
**7<sup>th</sup> – Honey Ashley**  
**10<sup>th</sup> – Rosalie Kelleher**  
**13<sup>th</sup> – Gideon Bender**  
**15<sup>th</sup> – Anna Marie Nash**  
**16<sup>th</sup> – John Crawford, George Powell**  
**18<sup>th</sup> – Darlene Baker, Paul Eliassen**  
**21<sup>st</sup> – Debbie Andrews, Dottie Rieger**  
**24<sup>th</sup> – Dianne Good, Patricia Schaefer**  
**26<sup>th</sup> – Delores Casper**  
**28<sup>th</sup> – James Casper, Caroline Nensewitz,  
Helen Sawyer**  
**29<sup>th</sup> – George Brinker**  
**30<sup>th</sup> – Don Brown**



## OCTOBER ANNIVERSARIES

---

- 2<sup>nd</sup> – William & Katharina Coryell**  
**8<sup>th</sup> – Desmond & Maxine Davis**  
**17<sup>th</sup> – Laurence & Mary Moquin**  
**16<sup>th</sup> – George & Susan Grosskopf**  
**22<sup>nd</sup> – Chuck & Judy Buskirk**  
**24<sup>th</sup> – Guy & Mary Ann Romano**  
**25<sup>th</sup> – Dick & Mary Ihrke**



**We ask if you notice information is missing or incorrect please let us know. Thank you!**





# October

| <b>Time</b>                  | <b>Acolyte</b>         | <b>Communion Assistants</b>                               | <b>Lector</b>       |
|------------------------------|------------------------|---|---------------------|
| <b>Sunday<br/>October 7</b>  | <b>Lucy Ann Clark</b>  | <b>Lucy Ann Clark<br/>Walter Geissler<br/>Dick Fricke</b> | <b>Dick Fricke</b>  |
| <b>Sunday<br/>October 14</b> | <b>Walter Geissler</b> |   | <b>Jim Schwartz</b> |
| <b>Sunday<br/>October 21</b> | <b>Kay Adkins</b>      | <b>Geri Julian<br/>Kay Adkins<br/>Walter Geissler</b>     | <b>Kay Adkins</b>   |
| <b>Sunday<br/>October 28</b> | <b>Jim Moyers</b>      | <b>Dick Fricke<br/>Denise Fitzpatrick<br/>Jim Moyers</b>  | <b>Dick Fricke</b>  |
| <b>Sunday<br/>November 4</b> | <b>Kay Adkins</b>      | <b>Kay Adkins<br/>Dick Fricke<br/>Jan Glass</b>           | <b>Dick Fricke</b>  |



|                             |                              |                    |
|-----------------------------|------------------------------|--------------------|
| <b>October Usher Team</b>   | <b>October Altar Guild</b>   | <b>Sound</b>       |
| <b>Robert Turner's Team</b> | <b>Karin Meredith's Team</b> | <b>Bill Adkins</b> |



### A Note from the Romano's

Words cannot express how comforting it is to have all the love and support of our Church Family. How awesome to know that our God was there, as were you all. Thank you all for the cards and phone calls we received. And a special thank you to the choir, for all of the support and love. We look forward to getting back to our friends and worship with you again.

Guy and Mary Ann Romano

### Interfaith Social Action Council/ Nearly New Thrift Shop

Redeemer is one of the 9 houses of worship that make up the ISAC. Our organization uses the funds from the Nearly New Thrift Store to award high school scholarships at Lennard and East Bay High Schools and grants to non-profit organizations in the South Shore area. Currently we are in need of volunteers at the shop. Every day we need a few new persons. You can go to the shop to volunteer or talk to Barb Lauer or Jane Trefren. Without volunteers the shop cannot run smoothly to generate the funds to continue our program. Please consider helping the shop.

Thank you,

Barb Lauer  
Jane Trefren

### Hands of Faith - Cancer Support

Hands of Faith is a training program for providing support to cancer patients. Join us in learning the needs of cancer patients and in knowing how to better understand and help those who are on this journey. The class will be held in Buhr Hall on Tuesday, October 9th from 10:00 AM to 2:30 PM. Lunch will be provided. There is no charge. Please sign up on the sheet on the welcome counter in the narthex if you will be attending.

### Lifeline Screening

On September 10th, Redeemer hosted Lifeline in Buhr Hall for various health screenings. 79 people participated.



*Life Line staff at the screening event.*

### Diabetes Class

A free workshop to help people with diabetes create balanced meals will be held at St. Andrew's Presbyterian Church on October 25<sup>th</sup> from 1:00 PM -2:00 PM. More info is on the welcome counter in the narthex. The Parish Nurse Team is helping to organize the class. Registration is required by October 19th. For questions, see Lois Hobratchsk.



## Celebrating Thrivent Members

Join us in celebrating what Thrivent members have accomplished for Redeemer and the community on **Sunday, November 4th** following the worship service. Since a Thrivent representative will be present, this will be an opportunity to learn more about Thrivent and membership benefits or to have your questions answered. Hearty snacks will be available.



**THRIVENT**  
FINANCIAL®

## Tree Trimming

In September we had the palm trees in the parking and the oak tree by the flag pole trimmed back by The Tree Boys.



If you have ever wondered how you can be of service to the church, here is a list of things that we are currently needing assistance with. Please help if you are able.

## Altar Guild

The Altar Guild team is in need of some new volunteers. A current member will provide training. This is a great way to serve. Please contact Karin Meredith at 634-8093 if you would like to volunteer. Your help is greatly needed and appreciated.

## Flag Bearer

A flag helper is needed. This is a pretty simple job that can be done in just a few minutes. We need someone that is able to track alerts (there is a website that will send email alerts out) and raise and lower the flags as needed.



## Rummage Sale

We are in need of people to come in on rummage sale collection days (October 15-17 from 9:30 AM to 12:00 PM) to help price and sort items to be sold at the rummage sale in February. If you can help out on one or more of these days your assistance would be greatly appreciated. No need to sign up just join us in Buhr Hall on collection days.

## Samaritans Alzheimer's Auxiliary Respite Group Fund Raiser Dance.

On Friday October 19, 2018, the Samaritans Alzheimer's Auxiliary Respite Group will have a fund raiser dance featuring the music of Kevin Brooks. This event will be held at SCC Community Hall, 1910 S Pebble Beach Blvd., from 7:00 PM to 9:30 PM. The cost is \$10.00 per person. Tables of 10 can be reserved. Respite is temporary relief when caregiving can be overwhelming. When the caregiver is given some time release they can renew and build other relationships. Everyone wins: the caregivers, the family and the volunteers. Respite is **RE**newal, **SP**iritual and **TE**mporal. Respite provides a break, a relief that volunteers give to a caregiver who is providing constant 24-hour-a-day care for someone. Tickets for the fund raiser can be picked up at the Samaritan Services office at 1207 N. Pebble Beach Blvd, Sun City Center, FL. Call 813-634-9283 for more information.

## South Shore Memory Cafe

Brain teasers, memories, and activities from 10:00 AM to 11:30 AM on the 4<sup>th</sup> Friday of the month. The next meeting will be held Friday, October 26.

Memory café is a social gathering for folks dealing with dementia. Dr. Cate hosts this monthly meeting for building support and sharing moments.

Join us at St Andrew Presbyterian church for a morning of connection. St. Andrew is at 1239 Del Webb Blvd. W., SCC.

RSVP to [catemccarty@gmail.com](mailto:catemccarty@gmail.com).

This event is sponsored by Olympian Clinical Research and by Arden Courts Memory Care Community.

## Evening with Dr. Cate, Dementia Coach

Monday, November 5 from 6:30 PM to 8:00 PM

In gratitude to St. Andrew Presbyterian for hosting South Shore Memory Café, Dr. Cate will highlight the best strategies for care companions living with dementia.

Dr. Cate uses her clinical and personal experiences as well as her academic credentials to focus on the best quality-of-life strategies.

In this interactive seminar, Dr. Cate will focus on:

- Purposeful living through memory cafes
- Strategies for engagement in the home
- Spiritual strategies for successful caregiving

Books by Dr. Cate will be available for purchase and signing. For more information please call 813-384-7571 or go to [Catemccarty.com](http://Catemccarty.com)

## Christmas Cheer & Carols

Christmas Cheer & Carols is new this year for Redeemer. This is a fellowship event that will be filled with singing, snacks, and Christmas cheer. This event will be held on Wednesday, December 5 from 5:00 PM to 7:00 PM, in place of the Wednesday Advent service. More details to come in the November newsletter.



The best way  
to spread  
**CHRISTMAS**  
**CHEER** is  
singing **LOUD**  
for all to hear



## South Shore Concert Band Christmas Concert

Save the date Monday, December 10<sup>th</sup> at 7:00 PM. This is the date of the South Shore Concert Band's Christmas concert here at Redeemer. This event will be a ticketed event. All are welcome but you will need a free ticket to attend. More information will be available in the November newsletter.



## Thrivent Matching Funds

Hurricane Florence plagued the southeastern Atlantic seaboard for days causing devastation and destruction for many.

As a membership organization of Christians, we know Thrivent members want to support those who are recovering from the hurricane. And we're making it easy to help.

**Make a personal donation; Thrivent will match up to \$1 million!**

You can make a personal donation through Thrivent.com to specific organizations helping the hurricane victims. When you do, Thrivent will match your donation dollar for dollar – up to \$1 million. This matching opportunity will run until the match is met or until Dec. 31, 2018, whichever comes first. Thrivent will help pay processing fees to ensure 100 percent of your donation goes directly to help those in need. To make a donation and to see the list of organizations included in the match, visit the [Disaster Response page on Thrivent.com](#).



## Bible Study

Members, visitors, guests, and friends, please join us on Thursdays at 10:00 AM for Bible study. The current topic is Hebrews. No prior knowledge of the Bible required, and you don't even need to bring a Bible. One will be provided for you.

Refreshments are served and it is FREE!

## Women's Bible Study

Women's Bible Study meets at noon the 2<sup>nd</sup> Friday of each month. In the month of October Women's Bible Study will meet on October 12<sup>th</sup>. Paula Simenson leads the Bible Study; a new topic is discussed every month. Any women interested in coming are welcome to attend.

## Library Project

The majority of the library project is complete. We are still accepting monetary donations for the project. In the future we hope to accessorize with a new side table, lamp, and throw pillows. If you would like to make a donation to the library fund write "library" on the memo line of your check or envelope.

## Box Tops for Education

Thank you for your continued support of the Box Tops for Education program. The box tops brought in to Redeemer have been going to support Thompson Elementary in Ruskin. Each box top turned in is worth 10 cents to the school. The school has averaged \$555 for the last 3 years! If you have any questions about the program please contact Kadie Dehne.

**Thank you for donating items for our Food Pantry in the Narthex closet. Please remember, NO opened packages or containers.**



**Support for others** (Collection boxes are on the Narthex counter)



**RECYCLE**

Don't forget to use the paper/card board recycling bin in the corner of the church parking lot.

## *The people of Redeemer believe in the power of prayer.*

Ginny Acker, Mary Ann Addleman, Nancy Almaguer, Clarence Antonsen, Gerry Barnicle, Rev. Donald Beal, Ursula Beger, Becky Bergman, Meta Boesel, Shirley Bogedain, Marilyn Bohl, Fran Bullock, Maggie Byrd, Delores Casper, Lenora Chapman, Anne Clouser, Carolyn Cole, William & Katharina Coryell, Betty Corzine, Carol & John Crawford, Juanita Cunningham, Dottie Earl, Dorothy Erickson, Kitty Fogt, Patty Fricke, Joan Glas, Bill Giblin, Irene Griffin, Ken Heindel, Mary Jane Hermanns, Lee Kesler, Norman & Anne Koehler, Jean Kostka, Martin Lehnert, Marv Lent, Harvey & LaVern Lentz, Cheryl & John MacPhee, Tillie McMahan, Herb McKittrick, Tamica McWilliams, Eva Michna, Alice Miller, Thyra Nagel, Louise Neam, Caroline Nensewitz, Sharon Olson, Nancy Payne, Nancy Phillips, Gerda Regelin, Fred Ristow, Guy & Mary Ann Romano, Marlene Scharback, John & Patti Schaefer, Helene Schwartz, Margaret Scott, Mariam Sorby, Linda Strohfus, Myrna Strom, Patrick Sturmer, Ingrid & Sam Thompson, Jane Trefren, Sylvia Wicktor, Ted Wilson.

## *Our Family and Friends*

Kristyn, Mark, Gerry Albert, Ashley & Zach Allen, Allan & Phillis Amlee, Roman Amon, Mike Arnold, Lois Barrett, Donna Barnett, Abigail Bayless, Terri Bergin, Tim Berns, Bill, Peggy & Kim Bierce, Lou Ann Bleeker, Lore & Max Bokma, Mark Bordwine, Steve Bullock, Bud Clark, George Clark, Norma Cole, Orv & Marlene Conner, Portia Conway, Julia Cox, Jeanette Crum, Joan Delaporte, Reanna Diaz, Jeannie Elliott, Steve Evans, Mark Everman, Peggy Farrell, Gilda Filosa, Tom Flamm, Cindy Freeman, Robin French, Katherine, Austin & August French, Meg Gallagher, Mauricio Garcia & family, Michael Golywacz, Marie Grazino, Ernestine & Bob Greenslate, Matt Gunter, Bill Hahn, Christa & James Harkins, Miranda Harris, Dan Haverland, Leonard Hermanns Jr., Diane Heindel, Jack & Cindy Hildebrandt, Michael Hillard, John Holland, Elaine Humphreys, Sandy & Bob Janicek, Sherry Janovec, Imogene Jimenez, Gina Kanouse, Gary, Joan, & Mike Kollerman, Aurora Kunnard, Nell & Mark Lucas, Ron, Vance & Bridgette Lumme, Annie Mangen, Zoe Marcus, Emily Marks, George Martin, Terry Mattia, Caroline Mayne, Shannon McCormick, Marilyn Meister, Dennis Michel, Mary Fran Miller, the Nelsen family, Amy Newman, Sheila Nicholson, Fred Nothold, David Nuchols, Christina O'Neill, Melissa Pickinson, Robert Poetzsch, James Pottinger, Kelly Powell, Renee Quackenbush, Joe Raymond, Clariiece Reitz, Neil Rich, Norma Roebker, Ed Robb, Lori Robb, The Matt Robinson Family, Mary Rollins, Ken & Lynne Rome, Joe Ruckert, Pam Goldy-Rudy, Hope Rund, Merrell Rushworth, Jane Ruth, Steve Sanfilippo, Dan & Don Schierenbeck, Joan Schollmeyer, Lynn & Patrick Sheridan, The Lois Smith Family, Mary Soja, Cindi & Jeff Sommers, Thomas Sullivan, Bobby Timm, Lucas Thor, Jim Tucker, Maria Veiazquez, Clair Vilasi, Melvin Vore, Agnes Wagaman, Megan Warner, Alex Watts, Donna Weber, MaryAnn Winters.

*God bless our country, our first responders, and our military men and women.*

# October 2018

| Sunday   | Monday   | Tuesday   | Wednesday  | Thursday  | Friday  | Saturday  |
|--|--|---|--|---|---|-----------|
|  | <b>1</b><br>10:30 AM-AI-Anon   | <b>2</b><br>10:00 AM-RLC Staff Meeting<br>3:30 PM-AA Women's Group  | <b>3</b><br>1:00 PM-Social Ministry Meeting<br>7:00 PM-Barbershop practice   | <b>4</b><br>10:00 AM-Bible Study<br>5:45 PM-Bells Practice<br>6:45 PM-Choir Practice                                    | <b>5</b><br>9:30 AM-Quilters                                  | <b>6</b>  |
| <b>7</b><br>10:00 AM-Holy Communion Worship                            | <b>8</b><br>10:30 AM-AI-Anon   | <b>9</b><br>10:00 AM-Hands of Faith<br>10:00 AM-RLC Staff Meeting<br>3:30 PM-AA Women's Group                             | <b>10</b><br>11:00 AM-Worship & Music<br>12:00 PM-40 <sup>th</sup> Anniv. Planning Mtg.<br>7:00 PM-Barbershop practice | <b>11</b><br>10:00 AM-Parish Nurses Meeting<br>10:00 AM-Bible Study<br>5:45 PM-Bells Practice<br>6:45 PM-Choir Practice | <b>12</b><br>9:30 AM-Quilters<br>12:00 PM-Women's Bible Study | <b>13</b> |
| <b>14</b><br>10:00 AM-Worship  | <b>15</b><br>9-12- Rummage Sale Drop off<br>10:30 AM-AI-Anon<br>2:00 PM-Interfaith Council Meeting | <b>16</b><br>9-12 Rummage Sale Drop off<br>10:00 AM-RLC Staff Mtg<br>3:30 PM-AA Women's Group<br>7:00 PM-Finance Team Mtg | <b>17</b><br>9-12 Rummage Sale drop off<br>7:00 PM-Barbershop practice   | <b>18</b><br>10:00 AM-Bible Study<br>5:45 PM-Bells Practice<br>6:45 PM-Choir Practice                                   | <b>19</b><br>9:30 AM-Quilters                                 | <b>20</b> |
| <b>21</b><br>10:00 AM-Holy Communion Worship                           | <b>22</b><br>10:30 AM-AI-Anon<br>1:00 PM-Council Meeting<br>6:00 PM Interfaith Council             | <b>23</b><br>10:00 AM-RLC Staff Meeting<br>3:30 PM-AA Women's Group   | <b>24</b><br>7:00 PM-Barbershop practice   | <b>25</b><br>10:00 AM-Bible Study<br>5:45 PM-Bells Practice<br>6:45 PM-Choir Practice                                   | <b>26</b><br>9:30 AM-Quilters                                 | <b>27</b> |
| <b>28</b><br>10:00 AM-Worship-Reformation Sunday<br>11:15 AM- BP Check | <b>29</b><br>10:30 AM-AI-Anon  | <b>30</b><br>10:00 AM-RLC Staff Meeting<br>3:30 PM-AA Women's Group   | <b>31</b><br>7:00 PM-Barbershop practice   |   |   |           |